

Library patrons Judy, Mei Ling, and Katarina enjoy a book on the ferry.



**JUNE 1 -  
AUGUST 31**

**SUMMER LEARNING 2025**

# **DIVE INTO DISCOVERY**

**Events, Challenges & Prizes for All!**

KITSAP REGIONAL  
 **Library**

# YOUR GUIDE

Dive into discovery with Kitsap Regional Library. Attend live concerts and shows, join cool events, crush challenges, and win awesome prizes! Everything you need to join from June 1 to August 31 is here in this guide and online at **KRL.org/summer**.

## SUMMER LEARNING CHALLENGES

Take on our summer challenges, log your progress using this guide's trackers, and visit a branch by August 31 to pick up fun prizes and enter the end-of-summer prize drawing.



Patrons Mei Ling and Kyoko read.



Patron Axton shares a starfish drawing.

### READ SOMETHING

Pages 6-7

Curl up with a good book (or audiobook)!  
Read 10 hours to earn a book or journal,  
50 hours for a bag, and 100 hours to choose  
from a T-shirt or pin.

### DO SOMETHING

Pages 8-10

Chart your course for a summer of adventure  
by setting your learning goals, then write your story  
in the notes. Turn in your story to be entered into  
the end-of-summer drawing for one of the swell  
Do Something challenge prizes!



### YOUTH RIDE FREE!

Anyone 18 or under can ride on buses, ferries, and  
trains for free in the Puget Sound with a student ID  
or a Youth ORCA card. Learn more and get a free  
Youth ORCA card at **FreeYouthTransitPass.com**.



# CELEBRATE 80 YEARS WITH **PASSPORT TO EXPLORE**

All year long, we're celebrating eight decades of Kitsap Regional Library! Pick up a Passport to Explore at your local library, visit all nine branches for a stamp, and receive a prize! But the fun doesn't stop there! Participate in side quests, grab your favorite limited-edition library card design, and stay tuned for more ways to celebrate at [KRL.org/80years](http://KRL.org/80years).

## **GO BELOW THE SURFACE TO BORROW MORE**

There are more than books to borrow at the Library.

- MP3 ReadAlongs
- Ukuleles
- STEM Learning Kits
- Video Games
- Telescopes
- And so much more!



Explore all the Library has to offer at [KRL.org/borrowmore](http://KRL.org/borrowmore). Scan the image with your phone's camera to reveal a clickable link.





# SUMMER PERFORMANCES

## **Animal Encounters: Australian Animals**

Explore unique wildlife and meet a variety of Australian creatures in this interactive show.

Space limited.

**Jul. 23, 2-3 pm**

**Poulsbo**

## **De Cajón Project**

Dynamic Afro-Peruvian concert featuring cajóns wooden box drums. Space limited.

**Jul. 30, 6-7 pm**

**Silverdale**

**Jul. 30, 2-3 pm**

**Kingston, Village Green Park**

## **Eric Ode Concert: Build a Better Dog House**

Children's author and songwriter Eric Ode's music-filled concert.

**Jul. 22, 10:30-11:15 am**

**Kingston, Village Green Park**

## **Eric Ode Concert: Children's Books, a Celebration in Song**

Children's author and songwriter Eric Ode's music-filled concert.

**Jul. 7, 2-3 pm**

**Bainbridge Island**

## **Gansango**

Contemporary and traditional West African dance and drum.

**Jul. 23, noon-1 pm**

**Bremerton, Admiral Theater**

## **Joyas Mestizas**

Seattle's original Mexican folk dance youth group performs.

**Aug. 16, 2-3 pm**

**Silverdale**

## **Magician Jeff Evans**

Jeff will perform "Science Magic" to amaze and entertain.

**Jun. 30, 2-3 pm**

**Greater Hansville  
Community Center**

## **Manchester Mondays**

**Jun. 30:** Magician Jeff Evans

**Jul. 7:** Eric Ode in Concert

**Jul. 14:** Eric Haines, One-Man Band

**Jul. 21:** Mikey the Rad Scientist

**Jul. 28:** West Sound Wildlife Birds  
**10:30-11:15 am**

**Manchester, qa'qad  
Stormwater Park**



# FUN FOR ALL AGES!

## School of Taiko

A world-class performance of Japanese drumming and culture.

**Jul. 16, noon-12:45 pm**

Bremerton, Admiral Theater

## Science Heroes:

### Adventure of the Missing Color

Hands-on experiments and stories that celebrate scientists and art.

**Jul. 30, noon-1 pm**

Dr. Martin Luther King Jr.

**Jul. 30, 3-4 pm**

Poulsbo, Waterfront Park Pavilion

## Show Brazil

Explore Brazilian music and culture in a highly energetic performance.

**Jul. 26, 6-7 pm**

Bainbridge Island

## Vuelta la Luna Circus

Watch circus pros perform, then try the basics yourself.

**Jun. 28, 11 am-noon**

Sylvan Way

**Jul. 2, 5-6 pm**

Poulsbo

## Waterfront Wednesdays

**Jul. 2:** Vuelta La Luna Circus

**Jul. 9:** Eli Rosenblatt in Concert

**Jul. 16:** Nancy Stewart in Concert

**Jul. 23:** Animal Encounters

**Jul. 30:** Mikey the Rad Scientist

**Aug. 6:** Youth Talent Show

(Auditions Jul. 25, 29, 11am-1 pm.)

Free sack lunch provided for those 18 and under by the South Kitsap School District.

**11 am-noon**

Port Orchard



Photo courtesy of Taiko Drumming.

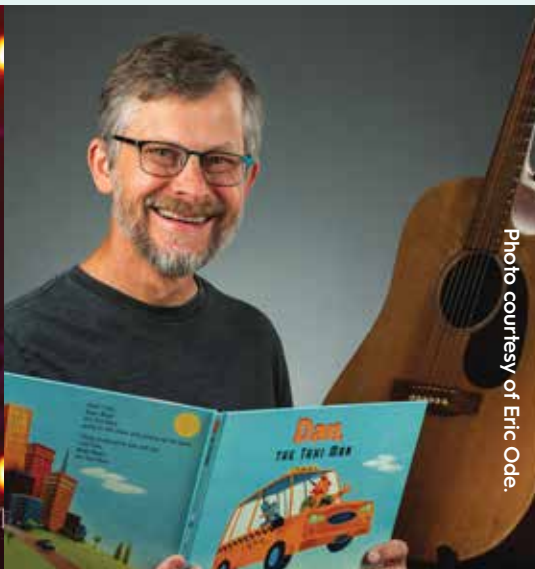


Photo courtesy of Eric Ode.



West Sound Wildlife handler presents with owl.

# READ SOMETHING CHALLENGE

## JUMP IN, READ 10 HOURS

Color a stripe on our shrimpy friend for every 20 minutes of reading. Once you reach 10 hours, visit a library branch by August 31 to choose a book or journal prize to keep, while supplies last. Want to push yourself? Keep reading! See all possible prizes on page 11.

# REACH NEW DEPTHS, READ 100 HOURS

Keep going! Using the color key, color a box for every 20 minutes of reading and uncover a hidden image. Read 50 hours to win a special-edition bag! Keep diving into books and read 100 hours to earn a 100-Hour Reader T-shirt or pin. Visit a branch by August 31 to choose. While supplies last.

**Gr=Gray, Bl=Blue, Te=Teal, Rd=Red, Or=Orange, Gd=Gold, Yw=Yellow, Bk=Black**

20 hr		30 hr		40 hr		50 hr		60 hr		70 hr		80 hr		90 hr		100 hr	
Yw	Yw	Yw	Yw	Yw	Yw	Yw	Yw	Bl	Yw	Yw	Yw	Bl	Yw	Yw	Yw	Bl	Yw
Yw	Yw	Yw	Yw	Yw	Yw	Yw	Yw	Yw	Yw	Yw	Bl	Yw	Yw	Yw	Bl	Yw	Yw
Gd	Gd	Gd	Gd	Gd	Gd	Gd	Gd	Gd	Bl	Bl	Bl	Gd	Gd	Gd	Gd	Gd	Bl
Gd	Gd	Gd	Gd	Gd	Gd	Gd	Gd	Gd	Gd	Bl	Bl	Bl	Gd	Gd	Gd	Bl	Bl
Gd	Gd	Gd	Gd	Gd	Bk	Bk	Gd	Gd	Gd	Gd	Bl	Bl	Gd	Gd	Bl	Bl	Bl
Or	Or	Or	Or	Bk	Bk	Bk	Bk	Bk	Or	Or	Or	Bl	Or	Bl	Bl	Bl	Or
Or	Or	Or	Bk	Bk	Bk	Bk	Bk	Bk	Bk	Or	Or	Or	Bl	Bl	Or	Or	Or
Or	Or	Bk	Bk	Gr	Bk	Bk	Bk	Bk	Bk	Bk	Or	Or	Bl	Or	Or	Or	Or
Rd	Rd	Bk	Gr	Gr	Bk	Bk	Bk	Bk	Bk	Bk	Bk	Pk	Bl	Rd	Rd	Rd	Rd
Rd	Rd	Bk	Gr	Gr	Bk	Bk	Bk	Gr	Gr	Bk	Bk	Bk	Bl	Rd	Rd	Rd	Rd
Rd	Rd	Bk	Gr	Gr	Bk	Bk	Bk	Gr	Gr	Gr	Gr	Bk	Bk	Rd	Rd	Rd	Rd
Te	Te	Bk	Gr	Gr	Gr	Bk	Bk	Bk	Gr	Gr	Gr	Bk	Bk	Bk	Te	Te	Te
Te	Te	Bk	Gr	Gr	Gr	Bk	Bk	Bk	Bk	Bk	Bk	Bk	Bk	Bk	Bk	Te	Te
Te	Te	Bk	Gr	Gr	Gr	Gr	Bk	Bk	Bk	Bk	Bk	Bk	Bk	Bk	Bk	Bk	Te
Te	Te	Bk	Gr	Gr	Gr	Gr	Gr	Bk	Bk	Bk	Bk	Bk	Bk	Bk	Bk	Bk	Bk

# DO SOMETHING CHALLENGE

Make this a summer of adventure and try something new and fun. You could learn a skill or investigate something you've always wanted to know more about—maybe both! Map out your summer plan below. Once you reach your goal, tell us about your summer adventure on the next page and be entered in the drawing to win one of the incredible Do Something prizes!

## THIS SUMMER, I WANT TO...

---

---

---

---



## NEED SOME IDEAS?

**LEARN TO SWIM**

**CROCHET A WHALE**

**FIGURE OUT WHY SOME SEA  
ANIMALS GLOW IN THE DARK**

**READ ABOUT DEEP SEA FISH**

**GO TO A CONCERT AT THE LIBRARY**

**READ A DIFFERENT TYPE OF BOOK  
(COMIC, AUDIOBOOK, NONFICTION, ETC.)**





# SUMMER STORY

Tell us about what you learned during the Do Something Challenge by answering the questions below. Then, fill out the form on the other side of this page. Bring your story into a branch to be entered into the Do Something drawing for an epic prize! (Make sure you answer every question to be entered to win!)

1.

**WHAT DID YOU LEARN OR DISCOVER THIS SUMMER?**

2.

**WHAT STEPS DID YOU TAKE TO LEARN OR INVESTIGATE? (BOOKS YOU READ, PEOPLE WHO HELPED YOU, VIDEOS YOU WATCHED?)**

3.

**TELL US A SHORT STORY ABOUT HOW YOU COMPLETED THIS CHALLENGE! ANY SURPRISES ALONG THE WAY? ANYTHING ESPECIALLY HARD OR FUN?**



# PRIZE DRAWING ENTRY FORM

We can't wait to hear what you did this summer! To enter the drawing, answer all of the questions on the previous page. Then, select your preferred prize and complete the entry form below. Turn in this page at any branch before August 31 to be entered into the drawing. Want to share more? We'd love to hear about your amazing summer of discovery! Upload photos and a summer memory at [KRL.org/summerfieldnotes](https://www.krl.org/summerfieldnotes).

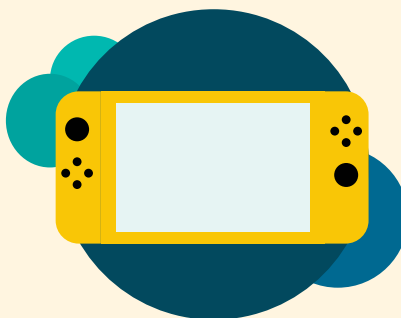
## SELECT YOUR PREFERRED PRIZE DRAWING

One of each prize will be awarded at every branch.



### ☐ **READ LOCAL**

Enjoy a \$150 certificate to your favorite local bookstore.



### ☐ **SWITCH IT UP**

Score a Nintendo Switch Lite and a \$70 download card or a new game.



### ☐ **SEE CREATURES**

Enjoy a membership pass to visit your favorite local zoo or aquarium.

Name: \_\_\_\_\_ Child ☐ Teen ☐ Adult ☐

Phone: \_\_\_\_\_ Email: \_\_\_\_\_

School or City: \_\_\_\_\_ Library Branch: \_\_\_\_\_

☐ I give Kitsap Regional Library permission to share my experience.

Some prizes may require adult supervision. No purchase necessary to win. Promotion running June 1-Aug. 31, 2025 is presented by Kitsap Regional Library (the Library) and sponsored by the Kitsap Regional Library Foundation, 1301 Sylvan Way, Bremerton, WA, 98310. The Library is not a sponsor. To enter, complete challenges through forms and present completed forms at any Library location. Forms must be received by 5 pm, Aug. 31, 2025. Three prizes per branch worth approximately \$150-\$300 (retail value) will be awarded. No cash will be awarded. Valid for Washington residents only. Entries outside WA are ineligible. Prizes must be picked up at a Library location. Winners, selected at random, will be notified by Sept. 16, 2025; you do not have to be present to win. Names only used with permission. Request a list of winners by mail: Kitsap Regional Library, Attn: Communications, 1301 Sylvan Way, Bremerton WA, 98310.



# READ SOMETHING CHALLENGE PRIZES

## READ 10

PICK A BOOK OR A JOURNAL



OR

## READ 50

EARN A TOTE BAG



## READ 100

CHOOSE BETWEEN A 100-HOUR READER SHIRT OR ENAMEL PIN



OR



Patrons Cindy and Dante enjoy shave ice.



# ALL AGES SUMMER FUN

## Camp Kingston

Explore summer camp activities.

**Jun. 17:** Camp Crafts

**Jul. 1:** Scavenger Hunt

**Jul. 15:** Tie Dye

**Aug. 5:** Nature Crafts & Exploration

**Aug 19:** Field Day & Kona Ice

**3-4:30 pm**

Kingston

## Chalk Art Extravaganza

Start summer by creating outdoor sidewalk art.

**Jun. 27, 11 am-noon**

Bainbridge Island

## Movie & Crafts

Watch a movie and make a matching craft.

**Aug. 13:** "Shrek"

**Aug. 20:** "Zootopia"

**1-4 pm**

Poulsbo

## Movies in the Park

Seating 8 pm. Movies start 30 minutes after sunset. In partnership with Bainbridge Island Metro Parks & Recreation District.

**Aug. 1:** Freaky Friday

**Aug. 8:** Footloose

**Aug. 15:** Barbie

**Aug. 22:** The Matrix

**Aug. 29:** Galaxy Quest

**8-11 pm**

Bainbridge Island,

Battle Point Park

## Peace Chalk Party

Chalk in a giant peace sign. Enjoy music, Kona Ice, and bubbles.

**Jun. 14, 2-3:30 pm**

Poulsbo

## Splash Times Fun Foam Party

Music, beach balls, and eco-friendly foam combine outside for a bubbly dance party!

Bring sunscreen, water bottle, and towel.

**Jun. 27, 2-3 pm**

Summer Learning Kickoff

Sylvan Way

**Aug. 12, 3-4 pm**

Kingston, Village Green Park

**Aug. 19, 1-2 pm**

Bainbridge Island,  
Battle Point Park

**Aug. 30, 3-4 pm**

Silverdale

**Aug. 9, 1-3 pm**

South Kitsap Regional Park

## Summer Finale

Grab your Summer Learning prizes and party on the lawn.

**Aug. 30, noon-4 pm**

Silverdale

## Talent Show Auditions

Open to everyone 18 and under.

**Jul. 25, 29, 11am-1 pm**

Port Orchard





Youth participant in annual Port Orchard summer talent show.

# KIDS

## COMMUNITY

### Bring it Together Kitsap

Food, games, and activities to create connectedness. In partnership with DocLuvTheKids.

**Jul. 12, noon-3 pm**

Bainbridge Island

### Slug Fest

Celebrate slugs through crafts, trivia, and more.

**Aug. 9, 10am-noon**

Kingston

## CRAFTS & DIY

### Character Creation

Learn to design characters that give stories life. Ages 9-12. Supplies provided. Registration required.

**Jul. 28, 1-3 pm**

Silverdale

### Collage Art Zines

Meddle with mixed media techniques to create unique art. Ages 9-12. Registration required.

**Jun. 30, 1-3 pm**

Silverdale

### Create Crafty Sea Creatures

Drop in to create a yarn octopus or kraken. Materials provided.

**Jun. 7, 14, 10 am-5 pm**

Poulsbo

### **Garden Stepping Stones**

Create and decorate a unique concrete garden stepping stone.

**Jun. 27, 3-3:30 pm & 3:45-4:15 pm**

**Kingston**

### **Just Sew**

Learn to sew with one of two beginner projects. Materials provided. Ages 8+. Registration recommended. In partnership with Kitsap & Olympic Peninsula's Clothing Textile Advisors.

**Jun. 28, 10 am-4 pm**

**Aug. 16, 10 am-4 pm**

**Bainbridge Island**

### **Sand Art**

Create artwork outside with a rainbow of craft sand. Ages 6-12. Registration required.

**Jul. 10, 2:30-3:30 pm**

**Manchester**

### **Seashell Critters**

Use glue guns to create a critter using shells and craft materials. Ages 6-12. Registration required.

**Jul. 24, 2:30-3:30 pm**

**Manchester**

### **Sensory Ocean Bottles**

Capture ocean magic with a calming ocean-themed sensory bottle. Registration required.

**Jun. 25, 2:30-3:30 pm**

**Poulsbo**

### **Snack n' Make**

Enjoy a snack and STEAM activity. Ages 7-11.

**Jul. 11, 18, 25, Aug. 1, 8,**

**11:30 am-1 pm**

**Port Orchard**

### **Summer Luminaries**

Create a luminary to light up your table or deck this summer. Ages 6-12. Registration required.

**Jun. 26, 2:30-3:30 pm**

**Manchester**

### **Undersea Art with Amber Kai Morgan**

Create amazing undersea-inspired art. Materials provided.

**Aug. 6, noon-1 pm**

**Dr. Martin Luther King Jr.**

### **Watercolor the Puget Sound**

Draw and watercolor Puget Sound wildlife with Artist Robin Bundi. Registration required. Ages 10-14.

**Jul. 11, 1:30-4 pm**

**Manchester**

### **Paper Marbling**

Create a painty-bubbly masterpiece. Ages 9-12. Supplies provided. Registration required.

**Aug. 11, 1-3 pm**

**Silverdale**

### **Put Your Stamp on It**

Explore printmaking techniques and create your own stamp. Ages 9-12. Registration required.

**Jul. 14, 1-3 pm**

**Silverdale**

### **Seashell Fest**

Create seashell crafts.

**Jul. 18, 11 am-1 pm**

**Bainbridge Island**

## **FOOD & COOKING**

### **Tween Cooking**

Learn basic but yummy recipes to make. Ages 10-14.

**Jul. 1, 8, 15, 22, 29, 11 am-12:15 pm**

**Bainbridge Island**

## **GAMES & GAMING**

### **Afternoon Gaming**

Play with our Infinity Games table and other gaming consoles.

**Jun. 4, 18, Jul. 2, 16, 30, Aug. 13, 27, 2-3 pm**

**Sylvan Way**

### **Family Analog Gaming**

Play with other families using our board and tabletop role-playing games or share yours.

**Jun. 21, Jul. 5, 19, Aug. 2, 16, 2-4 pm**

**Sylvan Way**

### **Gather & Game**

Play one of our board and tabletop role-playing games or share yours.

**Jul. 16, 2-5 pm**

**Poulsbo**

### **Introduction to D&D**

Learn this tabletop role-playing game. Characters provided. Ages 8-14. Registration required.

**Jul. 16, 2-3:30 pm**

**Poulsbo**

### Junior Jigsaw Puzzle Race

Assemble puzzles on your own or as part of a team to win.

**Jul. 23, 1-3 pm**

**Kingston**

### Minute to Win It Games

A fast-paced, fun series of minute-long games. Ages 8-12.

Registration required.

**Jul. 31, 2:30-3:30 pm**

**Manchester**

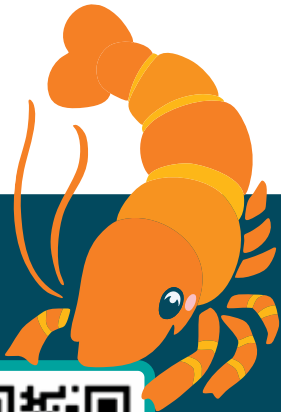
## READING & WRITING

### Beginning Reader Book Club

Read and discuss a book chosen by the group, and do a craft or play a game. Grades K-2.

**Jul. 17, Aug. 21, 4:30-5:15 pm**

**Kingston**



Visit [KRL.org/events](https://www.krl.org/events) for a full list of upcoming classes, events, and more. You never know what you might discover!

### Read to a Dog

Practice reading aloud to a friendly therapy dog. In partnership with Therapy Dogs International - Kitsap.

**Jun. 11, Jul. 9, 16, Aug. 13, 20,**

**3:30-4:30 pm**

**Little Boston**

**Jun. 11, 25, 3:30-4:30 pm**

**Poulsbo**

**Jun. 12, 26, Jul. 24, Aug. 14, 28,**

**3:30-4:30 pm**

**Sylvan Way**

**Jun. 12, Jul. 10, Aug. 14, 5-6 pm**

**Silverdale**

**Jun. 4, Jul. 2, Aug. 6,**

**3:30-4:30 pm**

**Kingston**

**Jun. 5, 12, 26, Jul. 3, 10, 17,**

**24, 31, Aug. 7, 14, 21, 28,**

**3:30-4:30 pm**

**Bainbridge Island**

### Read to a Dog & Kona Ice

Practice reading aloud to a friendly therapy dog. In partnership with Therapy Dogs International - Kitsap.

**Jul. 10, 3:30-4:30 pm**

**Sylvan Way**

### Reading Rebels Book Club

Read different theme books and discuss. Grades 4-6.

**Jun. 18, Jul. 17, Aug. 21, 4-5 pm**

**Bainbridge Island**

### Storybook Society Book Club

Read and discuss books.

Grades 1-3. Registration required.

**Jun. 10, Jul. 8, Aug. 12, 4-5 pm**

**Bainbridge Island**

### Teen Reading Buddies

Read aloud to a supportive reading buddy with Kingston High School's National Honor Society.

**Jun. 11, 3:15-4:30 pm**

**Kingston**

## STEM & LEARNING

### All the Way to the Ocean

Learn about storm drains and ocean pollutants with Kitsap Public Works. Ages 5-9.

**Jul. 24, 10:30-11 am**

**Kingston**

### Cardboard Creations

Get creative using cardboard and cardboard tools. Ages 9-18.

**Aug. 20, 3-5 pm**

**Kingston**

### LEGO Animal Friends

Create animals to add to our displays. Materials provided; space is limited. Ages 5+

**Jun. 26, 4:30-6:00 pm**

**Silverdale**

### LEGO Car Derby

Design a car and let's go racing. Materials provided; space is limited. Ages 5+.

**Aug. 28, 4:30-6:00 pm**

**Silverdale**

### **"Disaster Island"**

#### **LEGO Challenge**

Complete a challenge for a deserted island scenario.

Ages 6-12.

**Jul. 17, 2:30-3:30 pm**

**Manchester**

#### **LEGO Club**

Complete challenges.

Materials provided.

**Jun. 11, 25, Jul. 9, 23, Aug. 6, 20, 2-3 pm**

**Sylvan Way**

#### **LEGO Deep Sea ROV**

Design and display a deep sea exploration vehicle. Materials provided; space is limited. Ages 5+.

**Jul. 24, 4:30-6:00 pm**

**Silverdale**

#### **LEGO Diorama Design Lab**

Recreate a scene from a book, movie, or game.

Materials provided.

**Aug. 6, 2:30-4:30 pm**

**Poulsbo**

#### **LEGO Lounge**

Join other builders and create using our LEGO. Ages 5+.

**Jun. 4, 3:30-4:30 pm**

**Poulsbo**

### **Beneficial Bugs**

Discover how bugs help our local streams and forests. Ages 4-10. In partnership with Great Peninsula Conservancy & WSU Kitsap Extension Stream Stewards. Registration required.

**Aug. 8, 9-11 am**

**Silverdale, Clear Creek Trail**

**Sa'qad Interpretive Center**

### **Intertidal Investigations**

Explore our ecosystem with books, activities, and guided beach walks. In partnership with WSU Kitsap Extension Beach Naturalists.

**Jun. 12, 11:30 am-1 pm**

**Bremerton, Lion's Park**

**Jun. 25, 10:30 am-noon**

**Kingston, Saltair Beach**

**Jul. 10, 10:30 am-noon**

**Bremerton, Lion's Park**

**Jul. 23, 10 am-noon**

**Silverdale, Waterfront Park**



### **Kid Beach Walk**

Take a special beach walk exploration in partnership with Bainbridge Land Trust.

**Jul. 24, 11 am-noon**

**Bainbridge Island,**

**Waterfront Park**

### **STEM Tech Play**

Drop in to experiment with different STEM toys.

**Jul. 10, 3-5 pm,**

**Aug. 8 10:30 am-12:30 pm**

**Kingston**

### **Saturday STEM**

**Jun. 14:** Make it Fly!

**Jul. 12:** Shark Week

**Aug. 9:** Chemical vs.

Physical Reactions

**11 am-12:30 pm**

**Dr. Martin Luther King Jr.**

### **Wetland Wildlife Sleuths**

Discover our wetland ecosystem.

Ages 4-10. In partnership with Great Peninsula Conservancy and WSU Kitsap Extension Stream Stewards. Registration required.

**Jun. 24, 10 am-noon**

**Silverdale, Rotary Gateway Park**

## **FREE LUNCHES IN BREMERTON AND PORT ORCHARD**

Kids 18 and under can enjoy free lunches on weekdays at the Sylvan Way and Dr. Martin Luther King Jr. branches from late June through mid-August, courtesy of the Bremerton School District, and at the Port Orchard Waterfront Wednesday program from July 10 to August 14, provided by the South Kitsap School District, visit [KRL.org/summer](http://KRL.org/summer) in June for all the details.







# LITTLE KIDS

## MOVEMENT, MUSIC & ART

### Author Storytime

Sara Behrman reads her book, "The Sea Hides a Seahorse."

**Jun. 30, 10:30-11 am**

Kingston

### Baby Art & Exploration

Play and explore with art and sensory experiences. Ages 0-2.

**Jun. 26, Jul. 31, Aug. 28, 1-1:45 pm**

Kingston

### Baby Band

Musical experiences and playgroup. Ages 0-2.

**Jun. 5, 12, 19, 26, Jul. 3, 10, 17, 24, 31,**

**Aug. 7, 1-1:30 pm**

Dr. Martin Luther King Jr.

**Jun. 24 & Tuesdays Jul. 1-29,**

**9:30-10 am & 10:15-10:45 am**

Manchester

**Tuesdays Jul. 1-29, Aug. 5-19,**

**10-10:30 am & 10:45-11:15 am**

Silverdale

**Jul. 3, 17, Aug. 7, 21, 1-1:30 pm**

Kingston

### Baby Band: Bubble Party

Celebrate summer success and boogie with your baby. Ages 0-3.

**Aug. 26, 10-11 am**

Silverdale

### Firefighter Storytime

In partnership with North Kitsap Fire and Rescue.

**Jun. 23, 10:30-11:15 am**

Kingston

### Pajama Storytime

Bring a stuffy and wear pajamas for a sleepy storytime. Ages 0-5.

**Jun. 10, Jul. 8, Aug. 12,**

**5:30-6:30 pm**

Sylvan Way

### Parachute Party

Shake the big parachute while dancing to silly music. Ages 3-5.

**Jun. 24, Aug. 22, 11-11:30 am**

Kingston

### Storytime in the Park

In partnership with Poulsbo Parks & Recreation.

**Wednesdays, Jun. 25-Aug. 20,**

**10-10:30 am**

Poulsbo, Waterfront Park Pavilion

### Baby Storytime

Ages 0-18 months.

**Wednesdays, Jun. 11-Jul. 9,**

**10-11 am**

Sylvan Way

**Mondays, Jun. 2-Aug. 18,**

**11:30 am-noon**

Bainbridge Island

**Mondays, Jun. 23-Aug. 25,**

**1-1:30 pm**

Kingston

**Tuesdays, Jun. 24-Aug. 19,**

**1-1:30 pm**

Poulsbo

### Family Storytime

Ages 0-5.

**Tuesdays, Jun. 10-Aug. 5,**

**10:30-11 am**

Dr. Martin Luther King Jr.

**Fridays, Jul. 11-Aug. 8,**

**10:15-11 am**

Port Orchard

**Mondays, Jul. 7-Aug. 25,**

**10:30-11 am**

Kingston

**Thursdays, Jun. 26, Jul. 31-Aug. 7,**

**11:30 am-noon**

Little Boston

### Preschool Storytime

Ages 3-5.

**Wednesdays, Jun. 4-Aug. 20,**

**11:30 am-noon**

Bainbridge Island

**Fridays, Jun. 6-Aug. 29,**

**11 am-noon**

Sylvan Way

**Thursdays, Jun. 26-Jul. 31,**

**10:15-11 am**

Manchester

**Tuesdays, Jun. 24-Aug. 19,**

**10:30-11 am**

Poulsbo

### Toddler Storytime

Ages 18 months-3 years.

**Wednesdays, Jun. 4-Aug. 20,**

**10:30-11 am**

Bainbridge Island

**Fridays, Jun. 6-Aug. 29,**

**10-10:45 am**

Sylvan Way

## STEM & LEARNING

### Tots Under the Sea

Kids 0-3 are invited to an adventure under the sea.

**Aug. 8, 11 am-noon**

Bainbridge Island



Visit [KRL.org/events](https://www.krl.org/events) for a full list of upcoming classes, events, and more. You never know what you might discover!



# TEENS

## COMMUNITY

### An Afternoon at the Movies

Watch a movie on the big screen.  
Registration required.

**Jun. 25, 3-5 pm**  
Bremerton,  
Tracyton Movie House

### Chill with a Dog

Therapy dogs to help you relax  
after school.

**Jun. 2, 3:30-4:30 pm**  
Silverdale

### End of Summer Party for Teens

Celebrate the end of summer  
with crafts, games, and snacks.

**Aug. 15, 6-8 pm**  
Port Orchard

### Jump Around

Enjoy a trampoline park excursion.  
Registration required.

**Aug. 19, 1:30-3 pm**  
Silverdale, Sky Zone

### Monday Teen Space

After school fun with games,  
movies, and snacks provided.

**Jun. 2, 2-4 pm**  
Bainbridge Island

### Teen Pride Movie Afternoon

Watch a movie teens select, make  
pride crafts, and enjoy snacks.

**Jun. 30, 1-3 pm**  
Bainbridge Island



### Teen Space

Hang with friends and do activities and homework. Grades 6-12.

**Jun. 5, 12, 1-4 pm**

Silverdale

### Teen Summer Kick-Off Party

Celebrate summer with pizza, crafts, and gaming.

**Jun. 20, 6-8 pm**

Port Orchard

### Tween Field Games

Enjoy a variety of outdoor games. Ages 9-12.

**Fridays, Jul. 11-Aug. 29, 2-3 pm**

Sylvan Way

## LITERATURE & WRITING

### Teen Writing Camp

Attend a workshop lead by local YA author Rayne Lacko.

Registration required.

**Jul. 28-30, 1-3 pm**

Bainbridge Island

### Tween-Teen Book Club

Read and discuss books.

Grades 6-8. Registration required.

**Jun. 24, Jul. 22, Aug. 26, 4-5 pm**

Bainbridge Island

## CRAFTS & DIY

### Fashion Upcycling for Teens

Upcycle your clothes with pins, patches, and more.

**Jul. 11, 6-8 pm**

Port Orchard

### Glowforge: Personal Crest

Design and laser print a personal crest using Glowforge. Ages 9-18.

**Jul. 29, 3-5 pm**

Kingston

### Hojalata Tin Art

Make your own Hojalata Tin art with artist Vaquero Azul.

Registration required.

**Jul. 26, 1-4 pm**

Sylvan Way

### Kumihimo Bracelets for Teens

Learn Kumihimo and create friendship bracelets.

**Jun. 27, 1-2:30 pm**

Manchester

### Pride Upcycling Workshop

Revamp your wardrobe with sequins, buttons, iron-ons, etc.

**Jun. 12, 5:30-7:30 pm**

Bainbridge Island

### Teens Crochet: Granny Squares

Learn crochet basics and create a granny square.

**Aug. 8, 1:30-3:30 pm**

Port Orchard

### Totes for Teens

Create a custom canvas tote bag with fabric paint and stencils.

**Aug. 7, 1-3 pm**

Port Orchard

## STEM & LEARNING

### Catapult Challenge

Learn about catapults and compete with a DIY catapult.

**Jul. 8, 1-2:30 pm**

Manchester

### Introduction to Podcasting

Learn research techniques, and how to record and edit audio podcasts.

**Jul. 16-18, 2-4 pm**

Port Orchard

### Mapmaking with Robin Bundi

Learn to design a map, adding life with watercolor. Ages 12-18.

**Jul. 12, 11:30 am-2 pm**

Kingston

### Teen Art: Turkish Fold Maps

Create and explore techniques with a Bainbridge Island Museum of Art educator. Grades 7-12.

**Jun. 7, 10:30 am-12:30 pm**

Bainbridge Island

### Teen Free Paint Workshop

Open for all skill levels to self-discover new techniques. Materials provided. Grades 6-12.

**Jul. 21, 28, 2-4 pm**

Poulsbo

### Teen Lounge & Makerspace

Play games, hang out, and use our materials to create.

Grades 6-12.

**Jul. 8, 15, 22, 29, Aug. 5, Aug. 12, 2-4 pm**

Poulsbo

### Candy Shark-Cuterie

Arrange a fun candy and snack shark-cuterie board. Ages 12-18.

**Aug. 26, 3:30-4:30 pm**

Kingston



## GAMES & GAMING

### Dungeons & Dragons Meetup

Storytelling and role-play with fellow gamers. Supplies provided.

**Jun. 3, 4:30-6:30 pm**

Silverdale

### Dungeons & Dragons

A four-week campaign for beginners, but all levels welcome. Bring your character and dice or use ours. Ages 13-18.

Registration required.

**Jul. 7, 14, 21, 28, 1-3 pm**

Manchester

### Teen Gaming Extravaganza

Play a variety of games.

**Wednesdays, Jun. 4-Aug. 27, 3-4 pm**

Sylvan Way

## CAREERS & LEADERSHIP

### Resume Writing for Teens

Create a resume to meet your career goals.

**Jun. 23, 1-3 pm**

Port Orchard

### Teen Advisory Board

Share interests and help plan events while shaping the Library. Grades 6-12.

**Jun. 4, 3-4 pm**

Poulsbo

**Jun. 6, Jul. 3, Aug. 7, 4-5 pm**

Sylvan Way

## TRAVEL & OUTDOORS

### Basic Bike Maintenance

Learn the basics from teacher Brian Watson, CSI, LCI.

Registration required.

**Jul. 8, 1-4 pm**

Silverdale

### Bicycle Driver's Ed

Learn the essentials of riding on different roads.

Registration required.

**Jul. 15, 1-3 pm**

Silverdale

### Garden Adventure

Join a guided tour of local flora.

Registration required.

**Jul. 22, 2-4 pm**

Bremerton, Vista Gardens

### Go Take a Hike

Meet at Gateway Rotary Park before taking a gentle hike.

Registration required.

**Jul. 1, 2-4 pm**

Silverdale, Clear Creek Trail

### Wildflower Seed Bombs

Make local pollinators buzz.

**Jul. 25, 2-3 pm**

Port Orchard

## TEEN FIELD TRIP: BURKE MUSEUM

Head out on a (free!) field trip to explore the Burke Museum and learn all about natural history. Ferry transportation, museum admission, and lunch provided. Registration required. Ages 13-18.

**Friday, August 1**

**Burke Museum,  
4303 Memorial Way NE, Seattle**

Registration opens June 1. For more information, visit [KRL.org/teenfieldtrip](http://KRL.org/teenfieldtrip).





Library patron creates sea glass windchime.

# ADULTS

## ARTS & ENTERTAINMENT

### #Richard-III by William Shakespeare

A modern take on the famous play. In partnership with Grassroots Shakespeare NW. Ages 8+. Space limited.

**Jul. 11, 4-6 pm**  
Poulsbo

**Jul. 12, 19, 2-4 pm**  
Sylvan Way

### Nostalgia Movie Night: Clueless

Decorate slap bracelets while we watch the '90s classic, "Clueless."

**Jul. 23, 5:30-7:15 pm**  
Sylvan Way

### Sketch Kitsap

Sketch with artists of all levels at these community meet-ups.

**Jun. 13, 2-4 pm**  
Silverdale

**Jun. 27, Aug. 1, 3-5 pm**  
Port of Kingston Kiwanis Park

**Jul. 11, 2-4 pm**  
Silverdale Waterfront Park

**Aug. 8, 2-4 pm**  
Silverdale, TBD

# COMMUNITY

## Blood Drive

In partnership with Bloodworks Northwest.

**Jun. 18, 11 am-5 pm**  
Poulsbo

## Emergency Preparedness

Learn about local hazards and planning. In partnership with Bainbridge Prepares, Bainbridge Island Fire Department, and City of Bainbridge Island. Registration required.

**Jun. 17:** Gear Bags  
**Aug. 19:** Pets  
**6-7 pm**  
Bainbridge Island

## Explore Property Tax Relief

Find out if you are eligible from Kitsap County Assessors. FAQs and requirements on KRL.org.

**Jul. 16, 11 am-1 pm**  
Poulsbo

## Story Night

Stories told by local storytellers. Tell your story, visit [storynight.org](http://storynight.org).

**Jun. 5, Jul. 3, Aug. 7, 7-9 pm**  
Bremerton, Cloverleaf Sports Bar & Grill

## Suquamish Basket Weaving

Suquamish Museum educators share cedar, spruce, and more that create salmon trap, berry, and cooking baskets. Plus paper weaving activity. Ages 8+.

**Jul. 9, 4-5:30 pm**  
Poulsbo

## Suquamish Tribes Native Plants

Discover practical and medicinal uses of native plants with Suquamish Museum educators.

**Jun. 17, 5:30-6:45 pm**  
Poulsbo

## TreeBuilder: Genealogy Coaching

Build a family tree with Bainbridge Island Genealogical Society.

**Jun. 7, Aug. 2, 1-3 pm**  
Bainbridge Island

# CRAFTS & DIY

## Adult LEGO Club

De-stress by building Lego sets.

**Jun. 4, 18, Jul. 2, 16, Aug. 6, 20, 4:30-5:45 pm**  
Dr. Martin Luther King Jr.

## Maker Tech Test Drive

Experiment with our new makerspace tech tools.

**Aug. 2, 11 am-3 pm**  
Silverdale

## Art with Danielle Rimbert

Instructed class; materials provided. Registration required.

**Jun. 6:** Silly Angler Fish  
**Aug. 1:** Ocean Botanicals  
**6-8 pm**  
Dr. Martin Luther King Jr.

## Colored Sand Terrarium

Create a miniature landscape with colored sand and succulents.

**Jun. 4, 5-6:30 pm**  
Sylvan Way

## Crafternoon

Socialize with other crafters. Bring a project to work on.

**Jun. 4, 11, 18, 25, Jul. 2, 9, 16, 23, 30, Aug. 6, 13, 20, 27, 1-2 pm**  
Little Boston

## Crafting Community

Bring your sewing, beadwork, knitting, or craft and connect.

**Jun. 3, 10, 17, 24, Jul. 1, 8, 15, 22, 29, Aug. 5, 12, 19, 26, 11 am-noon**  
Sylvan Way

## Craft Supply Swap

Trade lightly used craft items for new-to-you supplies. Drop off early; no donation required.

**June 1-13: Drop Off**  
**Jun. 14: Swap 10 am-2 pm**  
Kingston

**Jun. 16-20: Drop Off**  
**Jun. 21: Swap noon-2 pm**  
Port Orchard

## DIY Lavender Self-Care Products

Visit a lavender farm and make bath products. Supplies provided. Registration required.

**Aug. 7, 3:30-6 pm**  
Manchester



### **Embroidery Hoop Seascape Weaving**

Turn a hoop into a loom and weave a seascape. Supplies provided. Registration required.

**Jul. 14, 4-6 pm**  
Port Orchard

**Jul. 16, 11 am-1 pm**  
Manchester

### **Fiber Arts Circle**

Bring your knitting, crocheting, sewing or craft and connect.

**Jun. 10, 24, Jul. 8, 22, Aug. 12, 26,  
5:30-6:30 pm**  
Silverdale

### **Fix-It Fair**

Free repair event for small appliances, lamps, and clothing. Visit KRL.org for guidelines and restrictions. In partnership with Kitsap County Public Works.

**Jun. 21, 11 am-2 pm**  
Silverdale

**Jul. 12, 10:30 am-1:30 pm**  
Dr. Martin Luther King Jr.

**Aug. 16, 11 am-2 pm**  
Port Orchard

### **Make a...**

Craft with provided materials.

**Jun. 12:** Vinyl Record Clock  
**Jul. 10:** Sun-dyed Tote Bag  
**Aug. 14:** Candle  
**2:30-5:30 pm**  
Dr. Martin Luther King Jr.

### **Mapmaking with Robin Bundi**

Learn to design a map of Kitsap with pen and watercolor.

**Jul. 12, 3-5:30 pm**  
Kingston

### **Paper Crafts Circle**

Bring your journal, collage, draw, doodle, paint, or use our supplies.

**Jun. 10, Jul. 8, Aug. 12, 3-5 pm**  
Kingston

### **Pink Eraser Art**

Make stamps and prints with pink eraser. Materials provided. Registration required.

**Jun. 18, 2-4 pm**  
Manchester

**Jun. 23, 4:30-6:30 pm**  
Port Orchard

### **Pop-Up Art**

Stop by and create.

**Jun. 21:** Collage Posters  
**Jul. 19:** Mini Zines  
**Aug. 16:** Paper Royal Card Dolls  
**10 am-3 pm**  
Kingston

### **Quill A Summer Mandala**

Learn quilling techniques.

**Jul. 2, 5-6:30 pm**  
Sylvan Way

### **Seashell Books**

Bind a book with a seashell cover. Registration required.

**Aug. 11, 4-5:30 pm**  
Port Orchard

**Aug. 14, 11 am-12:30 pm**  
Manchester

### **Stepping Stone Mosaic**

Create unique patterns and decorate stones to take home.

**Aug. 6, 5-6:30 pm**  
Sylvan Way

### **Summer Craft Night**

Make a snack tray, tea towel, and wine glass. Supplies provided. Registration required.

**Jun. 27, 6-8 pm**  
Port Orchard

## **GAMES & GAMING**

### **Chess Club**

All levels and experience welcome.  
**Jun. 3, 17, Jul. 1, 15, Aug. 5, 2-4 pm**  
Dr. Martin Luther King Jr.

Bring a board or use ours. 12 and under with adult. In partnership with Bremerton Chess Club.

**Jun. 4, 11, 18, 25, Jul. 2, 9, 16, 23, 30,  
Aug. 6, 13, 20, 27, 4-6 pm.**  
Sylvan Way

### **Game Night**

No experience needed. Ages 18+.

**Jun. 25, 5:30-7 pm:** Betrayal at House on the Hill  
**Aug. 27, 5-7 pm:** Player's choice; choose one of our games or bring your own.  
Sylvan Way

### **Mahjong Monday**

Open to seasoned players and beginners.

**Jun. 16, 30, Jul. 14, 28, Aug. 11, 25,  
4:30-6:30 pm**  
Silverdale



## Puzzle Club

Solve jigsaw puzzles, learn tips and tricks, complete challenges.

**Thursdays, Jun. 5-Aug. 28,**

**2-4 pm**

**Little Boston**

## Slugblaster TTRPG

It's D&D only with sick kickflips instead of swords and sorcery. Registration required.

**Jun. 11, 25, Jul. 9, 23, Aug. 13, 27,**

**6:30-8:30 pm**

**Bremerton, Blue Sky Hobbies**

## Kitsap Regional Library Community Forums

Kitsap Regional Library has a levy proposition on the Aug. 5 ballot.

Learn more at [KRL.org/levy](https://www.kitsaplibrary.org/levy) and join a community forum to ask questions and share comments.

**Jun. 2, 5:30-6:30 pm**

**Silverdale**

**Jun. 5, 5:30-6:30 pm**

**Port Orchard**

**Jun. 10, 5:30-6:30 pm**

**Poulsbo**

**Jun. 17, 5:30-6:30 pm**

**Virtual**

**Jun. 24, 11 am-noon**

**Virtual**



# HEALTH & WELLNESS

## Fishline: Access Assistance

Drop-in for help with rental assistance, mental health, food, utilities, and child activity support like driver's ed and summer camp from Fishline.

**Jun. 18, Jul. 16, Aug. 20, 11 am-1 pm**

**Poulsbo**

## Forest Bathing

A slow-paced walk with Cascadia Forest Therapy, ending with tea and snacks. Registration required.

**Jun. 7, 10 am-noon**

**Sylvan Way**

**Aug. 23, 10-11 am**

**Manchester**

**Aug. 23, 10 am-1 pm**

**Silverdale, Clear Creek Trail**

**Aug. 23, 3-4 pm**

**Kingston**

## Get CPR Certified

Learn CPR, how to use an AED, and other basic first aid skills. Registration required.

**Jul. 26, noon-4 pm**

**Poulsbo**

## Welcome to Medicare

Learn about enrollment, coverage, plan changes, and fraud prevention with Statewide Health Insurance Benefits Advisors.

**Jul. 22, 5:30-7 pm**

**Bainbridge Island**

# HOME & GARDEN

## Gardeners' Tea Party

Exchange gardening wisdom over tea.

**Jun. 20, Jul. 18, Aug. 15, 2-3 pm**

**Silverdale**

## Save Your Garden Seeds

WSU Master Gardeners Kitsap County Extension share which seeds are stable and how to collect and store them with.

**Jul. 12, 2-3 pm**

**Poulsbo**

## Master Gardeners' Horticulture Seminar

Join us for lectures by Master Gardeners. In partnership with Washington State University.

**Jun. 21, Jul. 19, Aug. 23, 1-2 pm**

**Bainbridge Island**

## Master Gardeners' Info Clinic

Washington State University's Extension Office Master Gardeners answer your questions.

**Jun. 5, 12, 26, Jul. 3, 10, 24, 31,**

**Aug. 7, 14, 28, 3-5 pm**

**Bainbridge Island**

# LITERATURE & WRITING

## Get Out & Write

Work on your writing with friends, optional prompts and sharing.

**Jun. 10, 24, Jul. 8, 22, Aug. 12, 26, 5-7 pm**

**Port Orchard**

## Poetry Reading & Open Mic

Michele Bombardier hosts a guest reader and open mic. Ages 14+. In partnership with Bainbridge Artisan Resource Network, Bainbridge Community Foundation, Bainbridge Island Rotary Club, Bainbridge Public Library Inc., The City of Bainbridge Island, Town & Country Markets, and the Bainbridge Island Poet Laureate Program.

**Jul. 17, Aug. 21, 7-8:30 pm**

**Bainbridge Island**

## Poetry Workshop

Bremerton's former poet laureate, Tia Hudson, discusses poetry styles. Create your own! Ages 9+.

**Jun. 21, Jul. 19, Aug. 16, 2-4 pm**

**Sylvan Way**

## TECHNOLOGY

### Kitsap Computing Seniors

Seniors explore computing and get hands-on help. In partnership with Kitsap Computing Seniors.

**Jun. 14, Jul. 12, Aug. 9,**

**10:30 am-noon**

**Silverdale**

### Tech Class & Hands-on Help

Learn the basics on your device or use one of ours. In partnership with Kitsap Computing Seniors.

**Thursdays Jun. 5- Aug. 28,**

**11 am-1 pm**

**Sylvan Way**

## BOOK GROUPS

### Best Seller Book Group

Email [Istone@KRL.org](mailto:Istone@KRL.org) for link.

**Jun. 23:** "Same as It Ever Was"

by Claire Lombardo.

**Jul. 21:** "We'll Prescribe You a Cat"

by Ishida Syou.

**Aug. 25:** "Pony Confidential"

by Christina Lynch.

**5-6 pm**

**Virtual**

### Bremerton-MLK Book Group

**Jun. 24, Jul. 22, Aug. 26,**

**4:30-6 pm**

**Dr. Martin Luther King Jr.**

### Dark Vibes

Choose from horror, thrillers, true crime, and noir books.

**Jun. 26:** Little Terrors

**Jul. 24:** Thalassophobia

**Aug. 28:** Cosmic Horrors

**7-8 pm**

**Virtual**

### First Tuesdays Book Group

**Jun. 3:** "The Mighty Red"

by Louise Erdrich.

**Jul. 1:** "The Women"

by Kristin Hannah.

**Aug. 5:** "James" by Percival Everett.

**1-2:30 pm**

**Little Boston**

### First Wednesdays Book Group

**Jun. 4:** "The Mighty Red"

by Louise Erdrich.

**Jul. 2:** "The Women"

by Kristin Hannah.

**Aug. 6:** "James" by Percival Everett.

**10-11:30 am**

**Little Boston**

### Friday Fiction Book Group

**Jun. 20:** "The Midnight Library"

by Matt Haig.

**Jul. 18:** "The Heaven & Earth

Grocery Store" by James McBride.

**Aug. 15:** "The Maid" by Nita Prose.

**3-4 pm**

**Kingston**

### Kingston Book Group

**Jun. 4:** "I Sing the Salmon Home"

by Rena Priest.

**Jul. 2:** "Nora Goes Off Script"

by Annabel Monaghan.

**Aug. 6:** "My Gourmet Memoir"

by Ruth Reichl.

**10-11:30 am**

**Kingston**

### Manchester Book Group

**Jun. 16:** "Love and Other

Consolation Prizes" by Jaime Ford.

**Jul. 21:** "The Writing Retreat"

by Julia Bartz.

**Aug. 18:** "Good Night, Irene"

by Luis Alberto Urrea.

**6-7 pm**

**Manchester**

## PUGET SOUND GENEALOGICAL SOCIETY

Explore your heritage, locate missing ancestors, and review local records at the Genealogy Center. Explore now at [psgsociety.org](http://psgsociety.org).

### Port Orchard Book Group

**Jun. 17:** "Symphony of Secrets"

by Brendan Slocumb.

**Jul. 15:** "Talking to Strangers: What We Should Know about Talking to People We Don't Know"

by Malcolm Gladwell.

**Aug. 19:** "The Midnight Library"

by Matt Haig.

**6-7 pm**

Port Orchard & Virtual

### Poulsbo Book Group

**Jun. 10:** "War on the Border"

by Jeff Guinn.

**Jul. 8:** Show & Share, 2025 Beach Reads

**Aug. 12:** "Liberation Day"

by George Saunders.

**3-4 pm**

Poulsbo

### Silverdale Book Group

**Jun. 18:** "The Witch Elm"

by Tana French.

**Jul. 16:** "Hamnet"

by Maggie O'Farrell.

**Aug. 20:** "The Personal Librarian"

by Marie Benedict.

**1-2 pm**

Silverdale

### Sylvan Way Book Group

**Jun. 14, Jul. 12, Aug. 9,**

**10 am-11:30 pm**

Sylvan Way

### Sylvan Way Nonfiction

#### Book Group

**Jun. 17, Jul. 15, Aug. 19,**

**10 am-11:30 pm**

Sylvan Way

### Thriller Book Group

**Jun. 17:** "Bright Young Women"

by Jessica Knoll.

**Jul. 15:** "The Bandit Queens"

by Parini Shroff.

**Aug. 19:** "Everyone in My Family Has Killed Someone"

by Benjamin Stevenson.

**7-8 pm**

Virtual



**Peninsula  
Community  
Health  
Services**

### Peninsula Community Health Service Mobile Medical Clinic

Get help with insurance enrollment, community resources, and health concerns with mobile medical clinic specialists.

**Jun. 11, Jul. 9, Aug. 13, 1-4 pm**

Port Orchard

**Jun. 18, Jul. 16, Aug. 20, 1-4 pm**

Poulsbo

**Jun. 25, Jul. 23, Aug. 27, 1-4 pm**

Sylvan Way

## FRIENDS OF THE LIBRARY

Friends raise funds for their local Kitsap Regional Library.

### Book Sale

Support your local branch by buying books, movies, and music.

**Jun. 8, 19, 29, Jul. 10, 20, 31, Aug. 10, 21, 31, noon-4 pm**

Bainbridge Island

**Jun. 14, Jul. 12, Aug. 9, 10 am-2 pm**

**Jun. 2, 9, 16, 23, 30, Jul. 7, 14, 21, 28,**

**Aug. 4, 11, 18, 25, 10 am-1 pm**

Silverdale

**Jun. 21, 10 am-2 pm**

Poulsbo

**Jun. 6, Aug. 1, 10 am-4 pm**

Sylvan Way

### Friends of the Library Meeting

Participate in a group.

**Jun. 10, Jul. 8, Aug. 12, 5-6 pm**

Sylvan Way

**Jun. 9, Jul. 14, 10-11 am**

Kingston

### Annual Father's Day Salmon Bake

**Jun. 15, 11:30 am-3:30 pm**

Manchester



Library closed May 26, June 19 & July 4

**Bainbridge** (206) 451-5050  
1270 Madison Ave. N, 98110

**Bremerton - Dr. Martin Luther King Jr.**  
(360) 447-5420  
612 5th St., 98337

**Bremerton - Sylvan Way** (360) 447-5480  
1301 Sylvan Way, Bremerton, 98310

**Kingston** (360) 860-5070  
26159 Dulay Rd. NE, 98346

**Little Boston** (360) 860-5080  
31980 Little Boston Rd. NE, 98346

**Manchester** (360) 447-5430  
8067 E Main St., Port Orchard, 98366

**Port Orchard** (360) 447-5440  
87 Sidney Ave., 98366

**Poulsbo** (360) 447-5450  
700 NE Lincoln Rd., 98370

**Silverdale** (360) 447-5470  
3650 NW Anderson Hill Rd., Suite 101, 98383

**Mobile Services** (360) 447-5505  
Offering services for individuals who have challenges visiting our library branches, Mobile Services delivers library materials to those that qualify. Learn more at [KRL.org/mobileservices](http://KRL.org/mobileservices).

Summer Learning is made possible in large part by the generous donors of:



The Kitsap Regional Library Foundation is honored to acknowledge its sponsors who help make Summer Learning possible:



Gesa Credit Union, Haselwood Auto Group, Sanchez, Mitchell, Eastman & Cure, PSC, and Virginia Mason Franciscan Health.

School District Disclaimer: Bainbridge Island School District, North Kitsap School District, Bremerton School District, Central Kitsap School District, and South Kitsap School District (Districts): These Districts do not sponsor or endorse this activity and assume no responsibility for it. Further, the Districts assume no responsibility for the content of this communication or the conduct or safety of the activity advertised. In consideration of the privilege to distribute materials, the District shall be held harmless from any cause of action filed in any court or administrative tribunal arising out of the distribution of these materials, including costs, attorney's fees and judgements or awards.